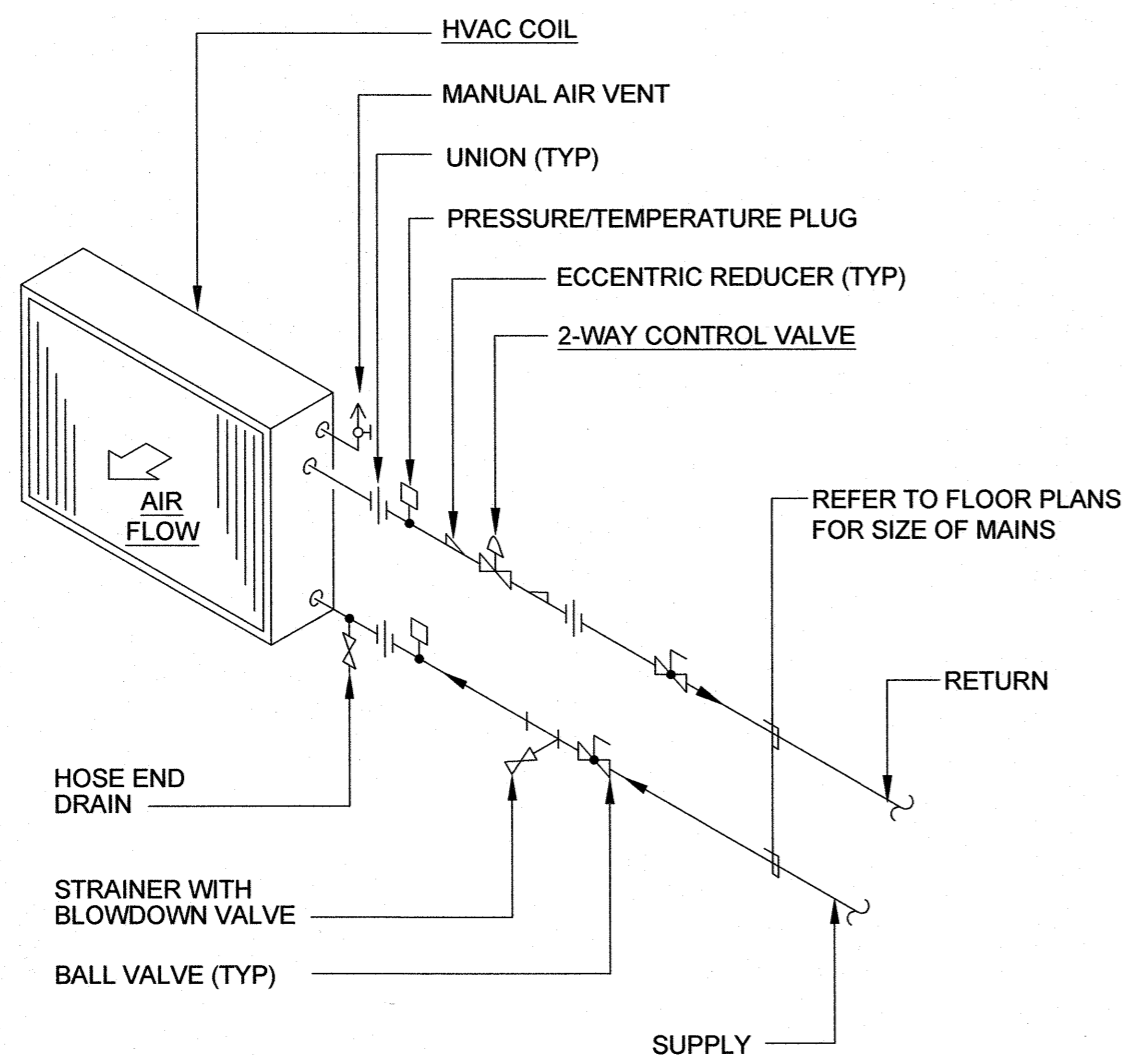


NOTES:

1. TRAPEZE HANGERS SHALL BE PROVIDED FOR ALL DUCT WORK. TRAPEZE HANGERS CANNOT BE USED FOR BRANCH DUCT WORK 12" IN WIDTH AND SHORTER REFER TO STRAP HANGER DETAIL.
2. SUPPORTS SHALL BE SPACED AND SIZED AS PER SPECIFICATIONS.
3. RIGID INSULATION SHALL EXTEND MINIMUM OF 3" BEYOND STRUT ON BOTH SIDES. MAINTAIN VAPOR BARRIER ACROSS STRUT.

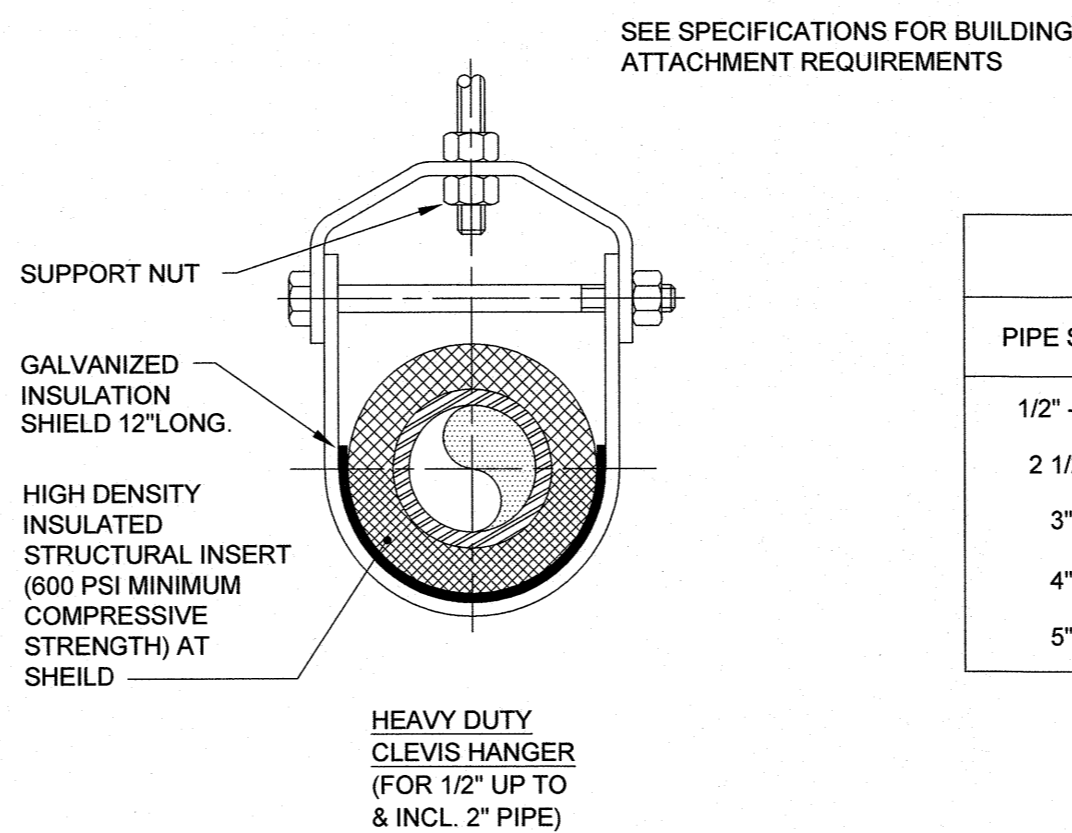
1 - DUCT HANGAR SUPPORT DETAIL

NOT TO SCALE



3 - HVAC COIL (2-WAY VALVE) DETAIL

NOT TO SCALE



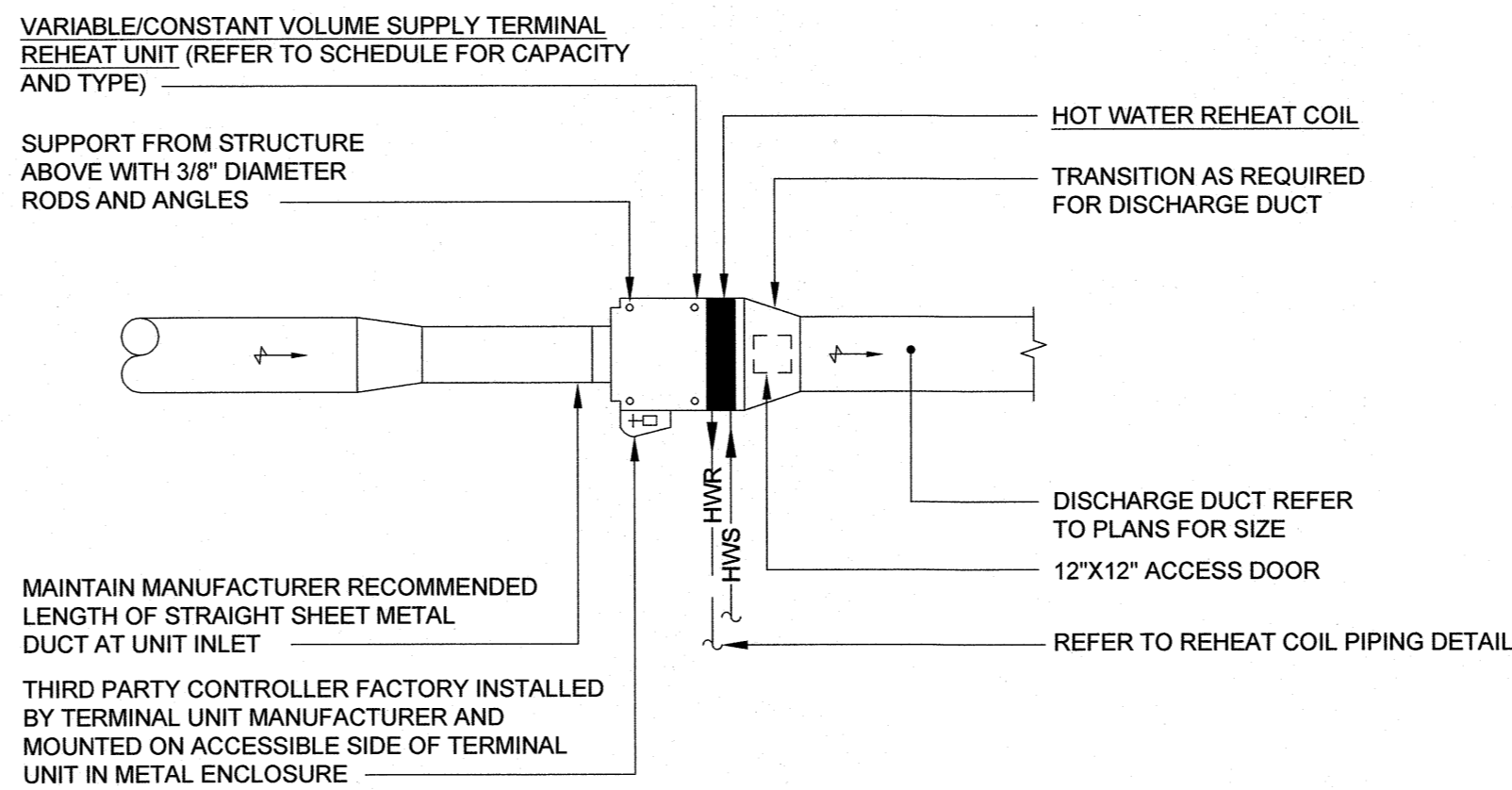
LOAD SCHEDULE		
PIPE SIZE	MAXIMUM SPACING	ROD SIZE
1/2" - 2"	8'	1/2"Ø
2 1/2"	10'	5/8"Ø
3"	10'	5/8"Ø
4"	14'	5/8"Ø
5"	14'	5/8"Ø

NOTES:

1. THIS DETAIL SHALL BE USED AS A GUIDE. ALL HANGERS SHALL MEET THE REQUIREMENTS OF THE SPECIFICATIONS.
2. PIPE 6" AND LARGER SHALL HAVE ROLLER SUPPORTED WITH DUAL RODS.
3. FOR CHW SERVICE OVER 3" REPLACE SADDLE WITH 12" LONG 14 GA SHIELD WITH RIGID INSULATION BETWEEN PIPE AND SHIELD.
4. WHERE TRAPEZE HANGERS ARE USED FOR HEATING HOT WATER PROVIDE ROLLERS.

2 - PIPE HANGAR SUPPORT DETAIL

NOT TO SCALE



4 - VAV TERMINAL REHEAT UNIT DETAIL

NOT TO SCALE

RECORD DRAWING

These Record Documents have been prepared based on information provided by others. The Engineer has not verified the accuracy and/or completeness of this information and shall not be the responsible for any errors or omissions which may be incorporated herein as a result.

Dated: 2017-10-13

By:

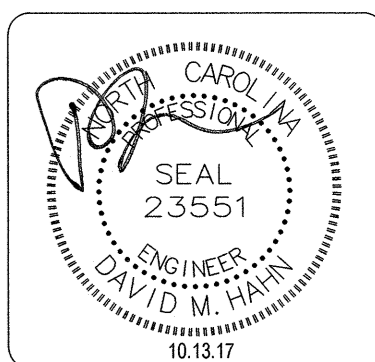
10.13.17	Date
RECORD DRAWINGS	Drawings
REVISIONS	Revisions

CBHF
Engineers, PLLC

2246 Yaupon Drive
Wilmington, NC 28401

Phone: 910.791.4000
Fax: 910.791.5266
www.cbhfindesigners.com
NC# P-0000

© Copyright 2017 CBHF Engineers, PLLC



UNIVERSITY OF NORTH CAROLINA WILMINGTON
DOBO HALL LABS 117 AND 119 RENOVATIONS
601 S. COLLEGE ROAD, WILMINGTON, NORTH CAROLINA 28403
STATE ID# 17-16975-01A

**MECHANICAL
DETAILS**

Job No.:	15250
Drawn:	GRM
Designed:	GRM
Checked:	DMH

Drawing No:

M0.3

Revision:
0